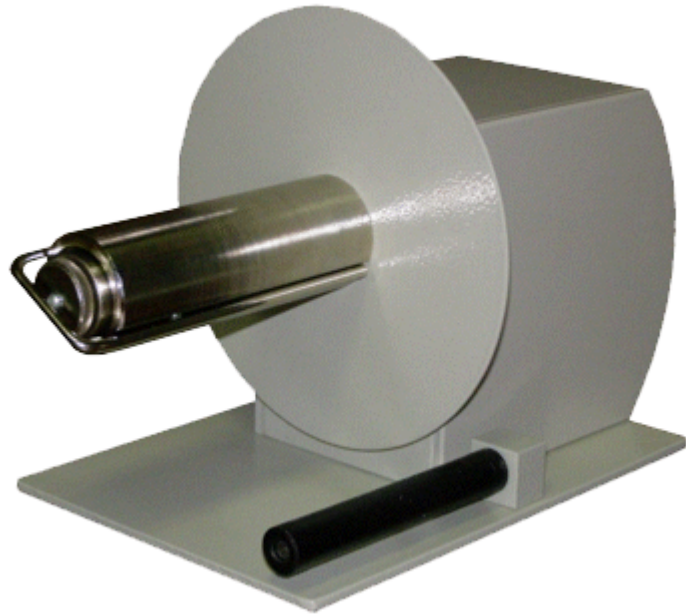


UN-115 Etiketten-Wickler, externe

UN-115 External Label Rewinder

The UN series external winders are designed to complement label printers roll-fed labels. The labels are wound directly onto the mandrel or onto a 40mm cavity attached to the mandrel with an L-shaped clamp (optional accessory) or to the cavity 76mm attached with a reducer (optional accessory). Can then be fed into label applicators, automatic label applicators and similar devices. The rollers are of all-metal construction. Models UN-115/215/220 wind via a friction clutch with adjustable tension torque.



Op
ti

Technical Description

Functionality & Operation

Print speed	125mm/sec (5 ips)
-------------	-------------------

	38mm
--	------

	150mm
--	-------

	1 ot./s
--	---------

Electrical

Power Source	Adapter 220V 50Hz, 12 VAC
--------------	---------------------------

Mechanical

Weight	2.95kg
--------	--------

Dimensions	Width: 167mm, Height: 150mm Length: 267mm
------------	---

	110mm
--	-------

CODEWARE, s.r.o.

Jaromírova 484/37

120 00 Praha 2 - Nusle

IČ: 61061395, DIČ: CZ61061395

+420 222 562 444

codeware@codeware.cz

<https://www.codeware.cz/>

