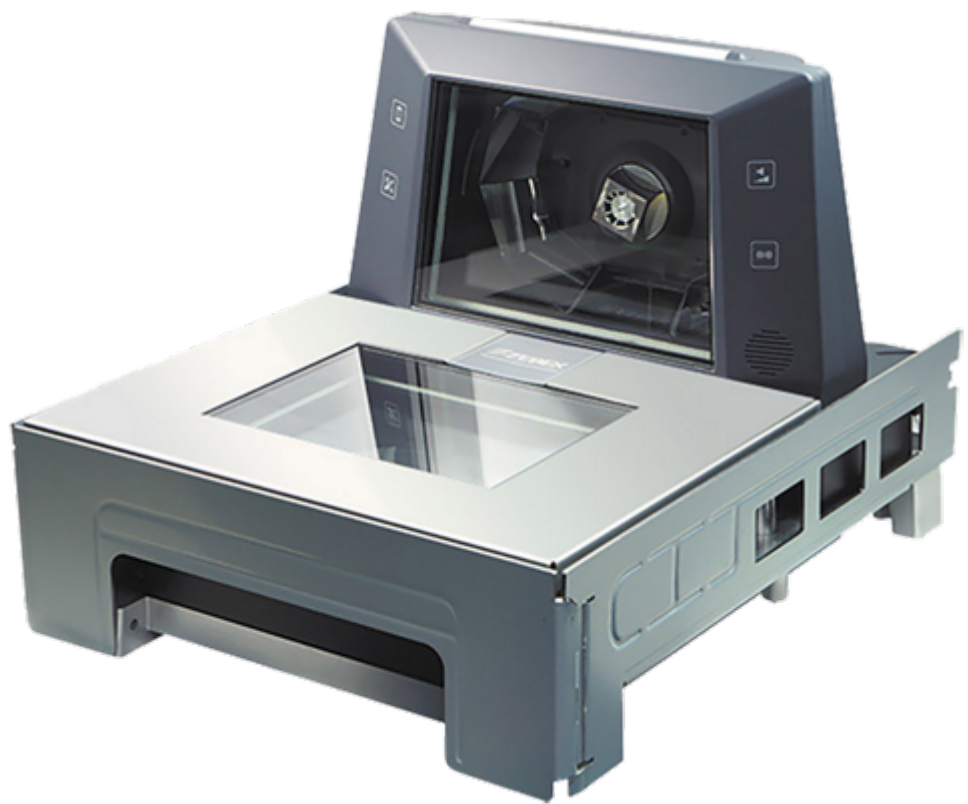


Z-6910M Bi-optic Omnidirectional In-Counter Bar Code Scanner, USB

The Zebex Z-6910 is the most powerful barcode scanner suitable for demanding, high-volume retail applications, providing continuous operation and low maintenance costs. Barcode reading is provided by two horizontal omnidirectional laser sensors and two vertical omnidirectional laser sensors. All the models have an EAS connection option, the Z-6910MS version has additionally a built-in scale.

Built with brilliant accuracy and wide scanning angles, Z-6910 bi-optic scanner eliminates traffics in high volume retail environments. Featuring an outstanding one-pass scanning ability, cashiers can scan items without constantly readjusting the scanner positions. By moving the checkout line at a much higher speed, Z-6910 can help you achieve a new elevated level of productivity and efficiency.



Main features of the Zebex Z-6910 series POS bar code scanner

- First class bi-optical technology
- Excellent first read rate
- Visual diagnostic LED
- Easy on-site configuration and upgradeability
- Artistic & clear light fiber indication design
- Error indication for quick and easy troubleshoots
- Multi-interface support/back mounting options

Product video:

YOUTUBE='3hG699l0mJI'

Features of the Z-6910 in-counter scanner:

YOUTUBE='6fbOsYzt02E'



Technical Description

Functionality & Operation

Indicators	Two-color LED (blue & red); 2 LED DOT matrix (5×7)
Indicators	Programmable tone & beep time
Communication interface	OPOS, keyboard, RS232, USB, USB-HID, USB-VCP, IBM-46xx
1D Barcode Symbolologies	All standard one-dimension barcodes

Optical

Light source	visible red LED 650 nm (2x dual, i.e. 4 VLD in total)
Depth of scan field	0 ~ 180 mm (horizontal, 13 mil)
Depth of scan field	0 ~ 250 mm (vertical, 13 mil)
Scannig pattern	40 lines horizontal
Scannig pattern	40 lines vertical
Scanning rate	3200 scan/sec horizontal & 3200 scan/sec vertictal
Resolution	4 mil horizontal; 5 mil vertical
Minimum symbol contrast	45%

Electrical

Power Source	100-240V, 1.5A, 50-60Hz
--------------	-------------------------

Mechanical

Dimensions	Width: 292mm, Height: 246mm Length: 399mm
Weight	6.87kg

Environment

Operating temperature	0 to 40°C
Storage temperature	-40 to 70°C
Operating humidity (non-condensing)	5 to 90%

Others

Certifications	Laser Class 2 (IEC 60825-1), EN 55022, CE, FCC Part 15, VCCI, RoHS, BSMI
----------------	--

CODEWARE, s.r.o.

Jaromírova 484/37
120 00 Praha 2 - Nusle
IČ: 61061395, DIČ: CZ61061395

+420 222 562 444
codeware@codeware.cz
<https://www.codeware.cz/>

